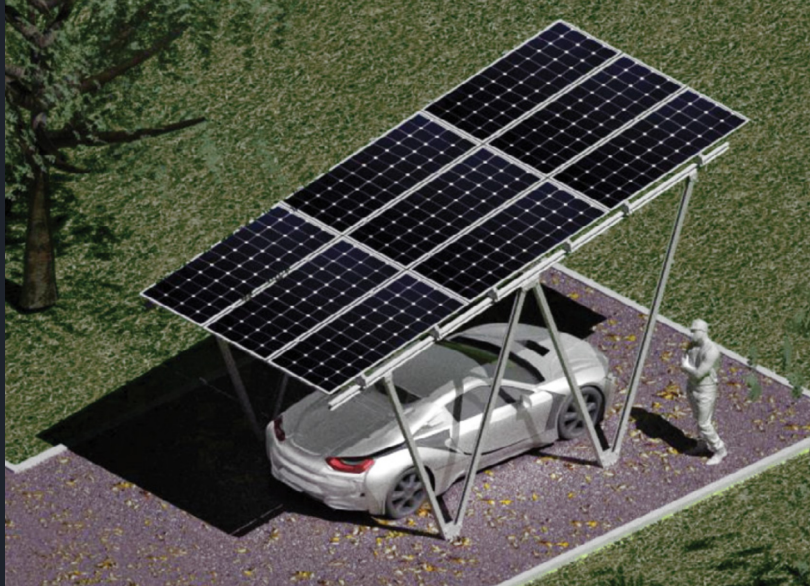


Carport

Version for 1 car
(9 PV)



Carport is a solution enabling generation of electrical energy while simultaneously using available space in the most efficient way, as well as protecting your car from falling objects.

Structure is manufactured from Magnelis® coated steel. It does not require any maintenance and is resistant to any kind of bad weather.

There is a possibility of ordering version with trapezoidal sheets in two colours:

■ RAL9006

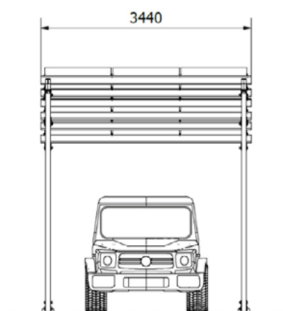
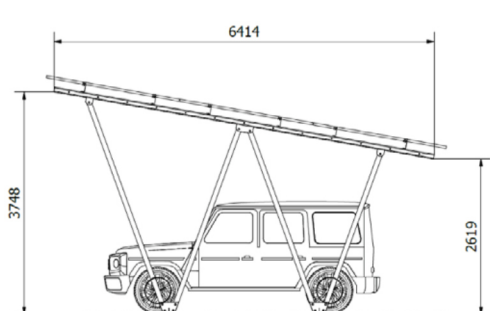
■ RAL7016

Technical specification

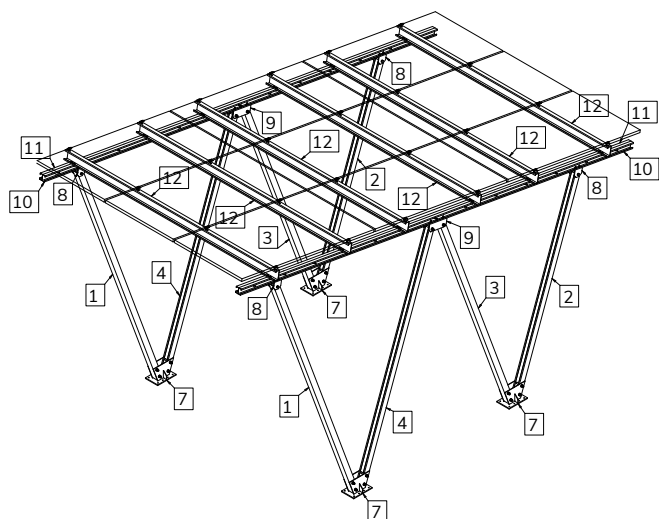
Max. number of PV modules in accordance to the length of the shorter side of the module	9 PV
Angle of inclination	10°
Max. vehicle size	3 x 2,5 m (width x height)

Summary

- ✓ optimal use of available space
- ✓ light, resistant structure
- ✓ suitable for PV modules with maximum size of 2300x1200 mm



Structure elements



Elements from cold-bent profiles

No.	Number	Material	Length (mm)
El. 1	2	S320 (Magnelis steel)	3805
El. 2	2		2890
El. 3	2		3295
El. 4	2		3335
El. 10	2		6500
El. 11	2		6500
El. 12	6		3440

Welded elements

No.	Number	Material
El. 7	4	Carbon steel (hot dip galvanized)
El. 8	8	
El. 9	4	

Other mounting parts

 <p>Middle clamp</p> <p>Art. No. KSR-U-NAT</p>	 <p>End clamp</p> <p>Art. No. K-32/35/40-NAT</p>	 <p>Allen screw M8</p> <p>Art. No. SR-IMB-M8</p>	 <p>Hex bolt M10 TZN</p> <p>Art. No. SR6K-M10-TZN</p>	 <p>Hex bolt M16 TZN</p> <p>Art. No. SR6K-M16-TZN</p>
 <p>Flange nut M8</p> <p>Art. No. NK-M8</p>	 <p>Hex nut M10 TZN</p> <p>Art. No. NAK6K-M10-TZN</p>	 <p>Hex nut M16 TZN</p> <p>Art. No. NAK6K-M16-TZN</p>	 <p>Trapezoidal sheet TR35 (optional)</p> <p>Art. No. BLACHA-TR35</p>	 <p>Trapezoidal bridge (optional)</p> <p>Art. No. MOSTEKT-40EPDM</p>